

Wildseek Gippsland, VIC, Hub

Rainguage and Stoney Creek - Koala Detection Missions

Image quality: Overall, good image quality.

Estimated area surveyed: 292 ha

Number of koalas detected: 1

Table 1. Survey date and estimated area surveyed per location. Areas were calculated from the spatial layers provided by the Gippsland Hub, Landcare.

Survey Date	Location	Area surveyed (ha)
05/09/2025	Rainguage	189.9
05/09/2025	Stoney Creek, Mount Alfred	102.1
TOTAL		292

Table 2. Number of detections per flight.

Mission	Polygons	Number of detections
Rainguage	1 and 2	0
Rainguage	3 and 4	1
Stoney Creek	1 to 3	0
TOTAL		1

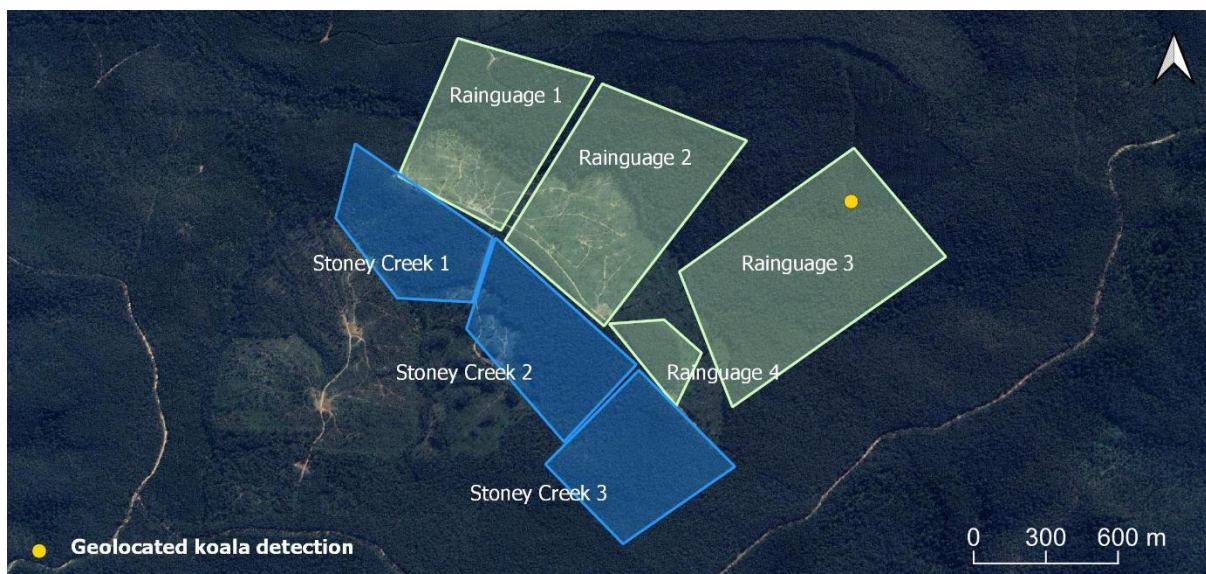


Figure 1. Polygons represent the surveyed area. One koala was detected. Background source: Google Earth.

Table 3. Coordinates of geolocated koala detection. The datum used to tabulate every coordinate was GDA2020 and the EPSG code 4326.

Latitude	Longitude	Survey
-37.69292	147.4934	Rainguage 3

Environmental information

We provide environmental information concerning the detection to support the submission of sightings to biodiversity data repositories.

Site

- **Technique:** Koala drone search
- **Source:** Sighting only
- **Microhabitat Type:** In tree
- **Vegetation¹:** East Gippsland Lowlands, Lowland Forest
- **Soil²:** Mudstone (major proportion); sandstone (major proportion); conglomerate (minor proportion).
- **Geological unit²:** Mudstone, sandstone: red mudstone generally poorly bedded, sandstone pale-coloured, quartz-rich; upward-fining with minor conglomerate near base.

Detections

Table 3: Topographic information³ associated with the single detection. TRI refers to terrain ruggedness index.

Elevation (m)	Slope (°)	TRI*	Aspect
354.28	10.46	4.01	217.23

Source:

1. <https://discover.data.vic.gov.au/dataset/native-vegetation-modelled-1750-ecological-vegetation-classes-with-bioregional-conservation-sta>
2. <https://datashare.maps.vic.gov.au/search?q=uuid%3Dd6f410a9-57a4-5414-9c22-0360328a02ef>
3. 1-second SRTM Level 2 Derived Digital Elevation Models (DEM-S) Version 1.0.